

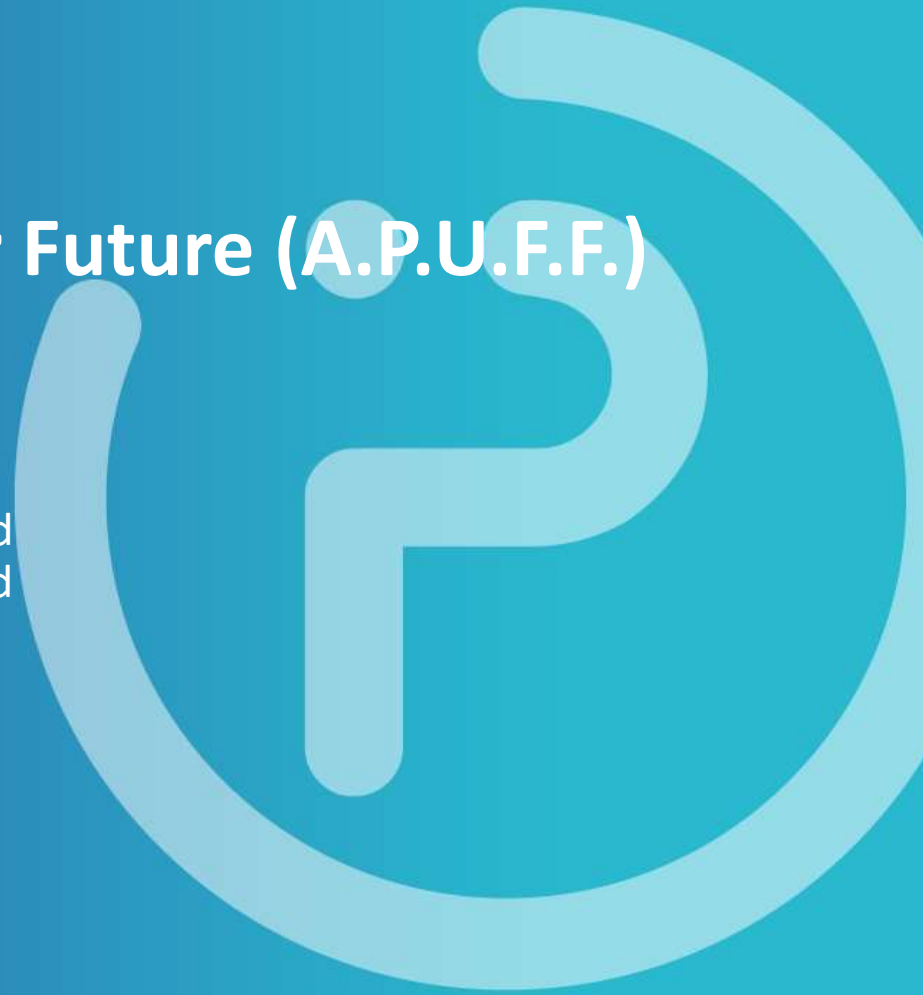
# Apulian Precision Unit For Future (A.P.U.F.F.)

## **TOPIC ADDRESSES: Topic 1**

Advanced biological analysis for diagnosis and monitoring of mono-polygenic diseases and cancer

**Spoke n. 4: S4D PRECISION DIAGNOSTICS**

SAPIENZA UNIVERSITA' DI ROMA



# PREDICT S.p.A. (Leader)

**An innovative company in the healthcare sector:** it markets ultrasound and radiology systems and develops technologies that help people live and work better. Predict has been an authorized distributor of GE Healthcare for the Puglia region since 2012. It is a constantly evolving company aligned with current trends and technologies, investing in research and development to transform visionary ideas into concrete and innovative projects.

Predict's strategy is based on:

- People;
- Customer focus;
- Excellence in services.



**HEALTHCARE**  
GE solutions  
and advanced technologies



**OPTIP**  
Close, at a distance



**APHEL**  
Serving hospitals:



**MISTRAL**  
Diagnosis in a breath,  
health in a blow



# INVESTMENTS CARE S.R.L. (Partner)



**Investments Care Srl** has always promoted prevention and strongly believes in the value of research. Since 2010, it has been providing high-quality healthcare services in the provinces of Bari and Taranto, thanks to state-of-the-art equipment and highly qualified healthcare professionals. Currently, it operates nine locations and offers services such as diagnostic imaging, specialist consultations, laboratory medicine, occupational medicine, and aesthetic medicine.

## **Vision**

To be the best choice for patients.

## **Mission**

To alleviate the concerns of patients, ensuring they feel they are in the right place to meet their healthcare needs.

# PROJECT OBJECTIVE

- The **A.P.U.F.F. Project** is based on the collaboration between a leading company in the field of breath analysis (leader) and another providing territorial healthcare coverage (partner). Together, they have initiated a large-scale experimental study aimed at testing and optimizing a **BREATH TEST** to support the screening and monitoring of:
  - Colorectal cancer (CRC)
  - Lung cancer (LC)



# Contributions to the Research Program of Spoke 4

- **Develop a "5P Medicine"**—personalized, precise, predictive, preventive, and participatory—by providing new screening pathways that are cost-effective, evidence-based, non-invasive, and accessible to everyone, aimed at reducing waiting lists and enabling early cancer detection.
- Development and validation of a breath test to support conventional screening pathways for **CRC** and **LC**, with significant socioeconomic and healthcare impacts on the region.
- Screening aimed at monitoring metabolic alterations induced by surgical interventions, therapeutic responses, or disease progression.



# Contributions to the Heal Italia Program and Precision Medicine

- The project represents an important step forward for the progress of European and national research and innovation policies, as it aims to identify and reduce inequalities between different territorial areas.
- Its goal is to strengthen the national research and innovation pipeline in the field of precision medicine through a rapid, accurate, reliable, and accessible monitoring method for everyone, to reduce waiting lists and support early cancer screening, improving the ability to intervene promptly and the quality of life for patients. The breath test addresses this need and, furthermore, has no limitations in terms of frequency of use.
- The project is expected to have a significant impact on society, including the creation of new job opportunities in research and in the use of a new service.

